



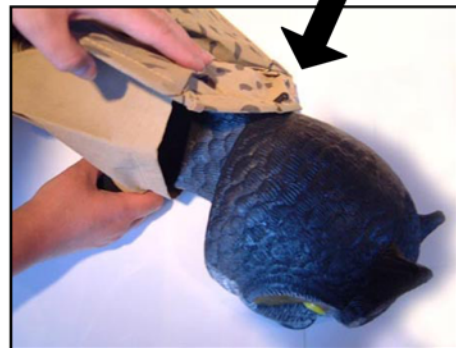
Bird-X, Inc.
300 N. Oakley Blvd.
Chicago, IL 60612
312.226.2473 • solutions@bird-x.com

PROWLER OWL INSTRUCTIONS

1. Slip neck into body and out through slit in bottom of windsock.



2. Place cross strut in groove on back of head.
3. Pull grommet up and over peg on the top of the head.



4. Spread wings out.
5. Mount on ½" conduit or post, or hang using your own fishing line.

Move Prowler Owl occasionally so birds don't acclimate to his presence in one position.