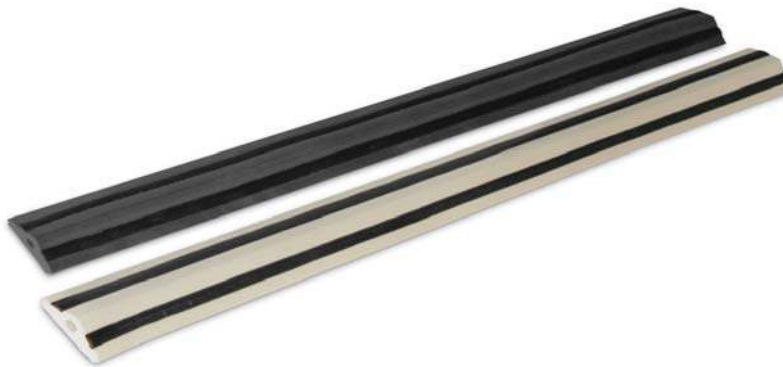


Pest Control for Today's Environment



Competitors



Track details	<p>UV stable, flame-retardant, robust PVC base drilled for flexibility with flat base.</p> <p>Designed with weather in mind, smooth design wicks moisture and dirt away.</p> <p>Conductive polymer covers highly conductive copper to prevent weathering.</p> <p>Side "wings" design improves water displacement.</p>	<p>Solid, less flexible PVC base with 2 glue troughs in base.</p> <p>Complex design creates pockets vulnerable to dirt and weathering.</p> <p>Exposed metal braiding and stitching subject to corrosion and shorts.</p> <p>Edges allow water to pool and may lead to damage.</p>
Length of track from 1 energiser	Copper conduit is innately more conductive.	Steel conductors have a higher resistance than copper.
Shorting through stitching	No stitching - Conductive material never comes into contact with the substrate.	Has stitching - Stitching deterioration and water absorption leads to electrical shorts.
Installation time	Do not have to pull wire from base, durable connectors 20%-30% faster (corner/straight).	Must pull wire from base. Crude look and installation.
Durability	Conductive polymer covers highly conductive copper to prevent weathering.	Exposed metal braiding and stitching leads to corrosion and shorts.
Discreetness	New connections make the Avishock less visible, safer, and more attractive.	Exposed wires and lead line is more visible and less attractive.
Pack size	65 ft. per box	50 ft. per box
Base flexibility	Very flexible and form fitting.	Very flexible and non-form fitting.
Rain run-off	Smoother design promotes moisture wicking and less debris build-up.	Complex design creates pockets vulnerable to dirt and weathering.
Ease of connectors	Simple and Fast.	Complex and cumbersome.