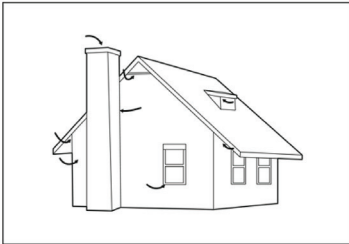




BatChute Instructions

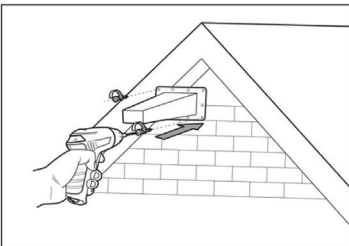
WARNING: Incorrect installation, adjustment, or modification can lead to property damage, animal injury, or even death. Read the instruction manual carefully and completely before beginning the installation.

WARNING: In some areas, removing bats is illegal. Before proceeding, consult your local government agency for regulations. Do not install this device during bat pup season (April - August). Bat pups are unable to fly until they are fully mobile, and installing during this time is inhumane, as it will result in the death of the pups.



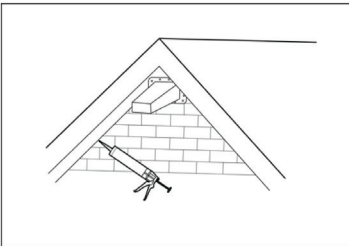
Step 1: Inspection

Carefully examine the property for any bat entry points. Look for gaps larger than $\frac{3}{4}$ " x $\frac{3}{4}$ " or bat guano around the base of the building or stuck to walls/siding.



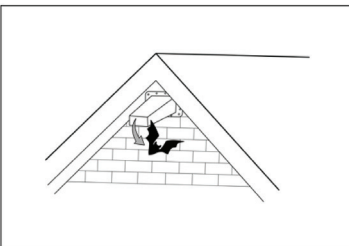
Step 2: Position the BatChute

Place the BatChute securely over the main entry hole. If necessary, use scissors to trim the base to fit the desired shape. Ensure that it is tightly secured using screws, leaving no gaps for bats to re-enter.



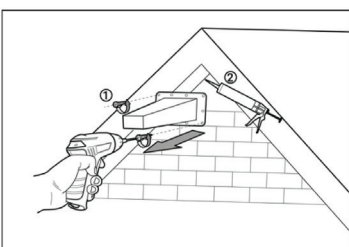
Step 3: Seal Additional Gaps

Seal all remaining gaps in the surrounding area to prevent bats from finding alternative entry points into the structure.



Step 4: Monitor Bat Activity

Allow 24-72 hours for the bats to exit through the BatChute. After this period, listen for any noises or observe signs of activity. Perform a thorough inspection to confirm that no new holes or damages have appeared. Once you are sure, carefully remove the BatChute.



Step 5: Prevent Future Infestations

Repair the original entry hole where the BatChute was installed to prevent future bat infestations.