



BirdChute Instructions

WARNING: Incorrect installation, adjustment, or modification of this product may result in property damage, injury to animals, or even death. Carefully read and follow the entire instruction manual before beginning installation.

IMPORTANT: Baby Season Considerations

During spring and summer (baby season), inspect the area for baby birds before installing the BirdChute One Way Door. If babies are present:

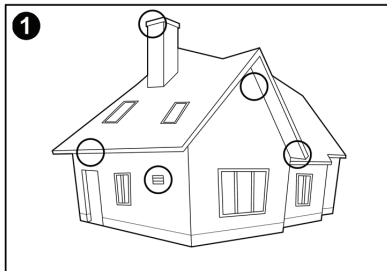
- Either physically remove them or delay installation until they are able to fly.
- If you discover baby birds after installation, immediately remove the BirdChute. Either relocate the babies to a safe, nearby container or wait until they are mobile before reinstalling the device.

Handling Baby Birds:

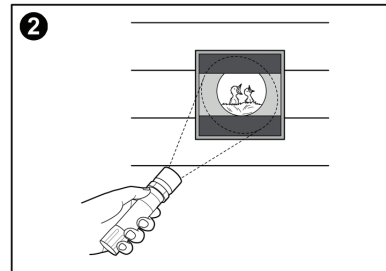
- Always wear gloves when handling baby birds.
- Place them in a clean container near the entry hole, allowing the mother to find and continue caring for them. This process may take several hours.
- Remove the container once the birds have flown away.

WARNING: Relocating baby birds carries risks. They may be abandoned by their mother, attacked by predators, or succumb to extreme temperatures.

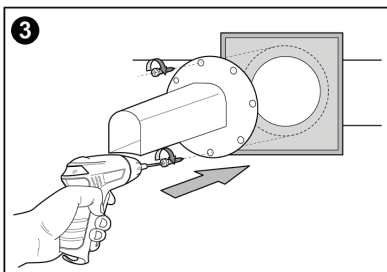
LEGAL NOTICE: Under the Migratory Bird Treaty Act (MBTA) of 1918, disturbing the active nests of protected bird species is illegal. Violations can result in substantial fines. We strongly recommend contacting the U.S. Fish & Wildlife Service before taking any action to ensure compliance with federal laws and to safeguard the birds.



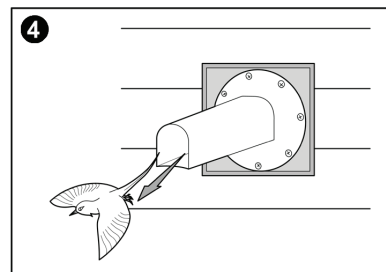
1 Thoroughly examine the property for any signs of bird entry points.



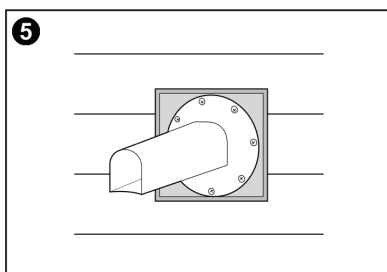
2 During spring and summer, inspect the nest site for any signs of eggs or baby birds. If found, follow the guidelines provided above.



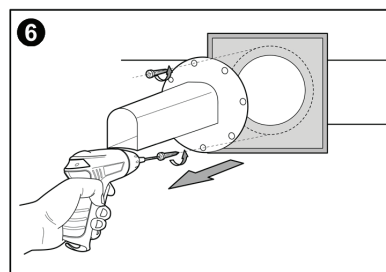
3 Remove nesting material. Position the BirdChute over the entry hole. If the hole is larger than the base of the BirdChute, use additional materials, such as 1/2-inch mesh, to cover the area, then secure the BirdChute over it. Use screws or zip ties to attach the BirdChute.



4 Wait 24-72 hours for the birds to exit through the BirdChute. This process may take longer during colder seasons.



5 After the 24-72 hour period, inspect the area for any remaining bird activity or new holes before proceeding.



6 Once all bird activity has ceased and the birds have left, carefully remove the BirdChute. Repair the entry hole or any damaged areas to prevent future bird infestations.